

IES Report

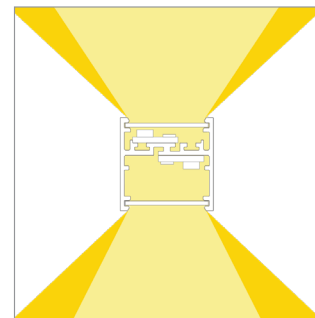
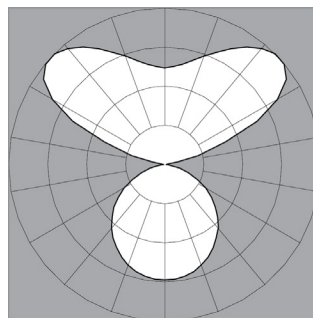
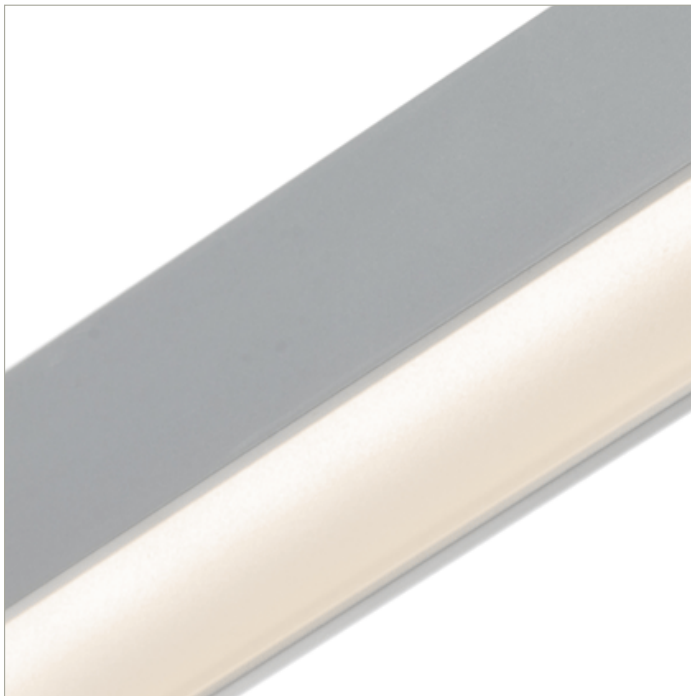
BoxRail[®] | 207 | Wide Batwing, up | Diffuse, down | 80 CRI | LO

207-BX-XX-4-48-XX-XX-XX-XX-X-X-Z-LO-35-G1D1-X-AL / WH-X

	2700K	3000K	3500K	4000K
Efficacy - Lumens per Watt	89	92	94	94
Total Lumens, 4' rail length (1219mm)	2558	2638	2692	2692
Lumens per foot (305mm)	639	660	673	673
Lumens per foot UP (305mm)	371	383	391	391
Lumens per foot DOWN (305mm)	268	276	282	282
Input Power (W), 4' rail length (1219mm)	28.8	28.8	28.8	28.8
Watts per foot (305mm)	7.2	7.2	7.2	7.2
CRI	82	82	82	82

Due to the large number of options in Vode's product offering, most Vode IES reports are factored reports prepared from source reports. Source reports are the IES test reports prepared for Vode by an NVLAP accredited photometric test laboratory. Factored reports are based on data from the Vode source reports.

If the data above is in black, it is directly from a Vode source report. If it is in grey, it is factored from Vode source reports. Reference details on Vode source reports can be found on the [IES File Finder](#) page on vode.com.



IES Report

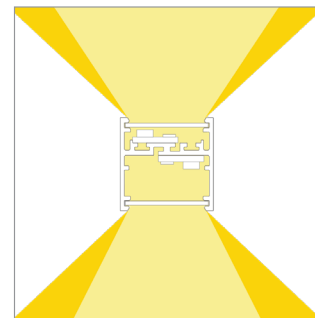
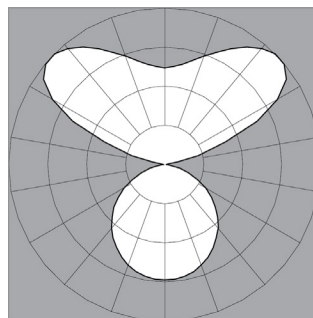
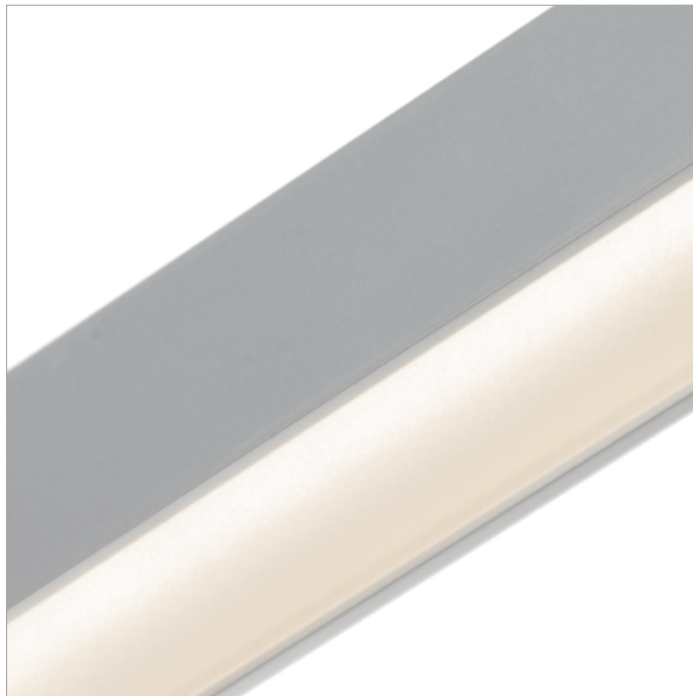
BoxRail[®] | 207 | Wide Batwing, up | Diffuse, down | 80 CRI | SO

207-BX-XX-4-48-XX-XX-XX-XX-X-X-Z-SO-35-G1D1-X-AL / WH-X

	2700K	3000K	3500K	4000K
Efficacy - Lumens per Watt	102	105	107	107
Total Lumens, 4' rail length (1219mm)	5115	5277	5384	5384
Lumens per foot (305mm)	1279	1319	1346	1346
Lumens per foot UP (305mm)	743	766	782	782
Lumens per foot DOWN (305mm)	536	553	564	564
Input Power (W), 4' rail length (1219mm)	50.5	50.5	50.5	50.5
Watts per foot (305mm)	12.7	12.7	12.7	12.7
CRI	82	82	82	82

Due to the large number of options in Vode's product offering, most Vode IES reports are factored reports prepared from source reports. Source reports are the IES test reports prepared for Vode by an NVLAP accredited photometric test laboratory. Factored reports are based on data from the Vode source reports.

If the data above is in black, it is directly from a Vode source report. If it is in grey, it is factored from Vode source reports. Reference details on Vode source reports can be found on the [IES File Finder](#) page on [vode.com](#).



IES Report

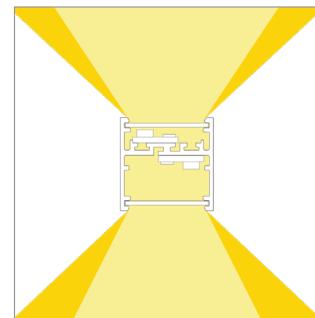
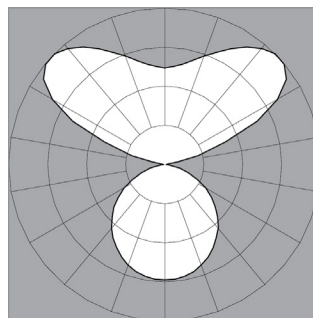
BoxRail® | 207 | Wide Batwing, up | Diffuse, down | 80 CRI | HO

207-BX-XX-4-48-XX-XX-XX-XX-X-X-Z-HO-35-G1D1-X-AL / WH-X

	2700K	3000K	3500K	4000K
Efficacy - Lumens per Watt	95	98	100	100
Total Lumens, 4' rail length (1219mm)	9719	10025	10230	10230
Lumens per foot (305mm)	2430	2506	2558	2558
Lumens per foot UP (305mm)	1411	1456	1485	1485
Lumens per foot DOWN (305mm)	1019	1051	1072	1072
Input Power (W), 4' rail length (1219mm)	103.1	103.1	103.1	103.1
Watts per foot (305mm)	25.8	25.8	25.8	25.8
CRI	82	82	82	82

Due to the large number of options in Vode's product offering, most Vode IES reports are factored reports prepared from source reports. Source reports are the IES test reports prepared for Vode by an NVLAP accredited photometric test laboratory. Factored reports are based on data from the Vode source reports.

If the data above is in black, it is directly from a Vode source report. If it is in grey, it is factored from Vode source reports. Reference details on Vode source reports can be found on the [IES File Finder](#) page on [vode.com](#).



IES Report

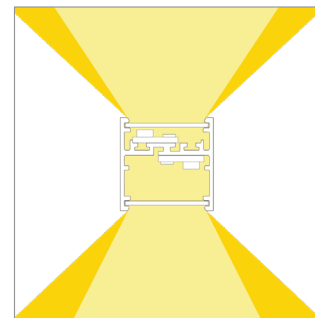
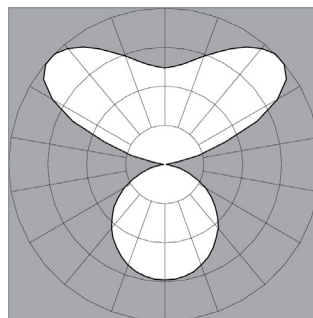
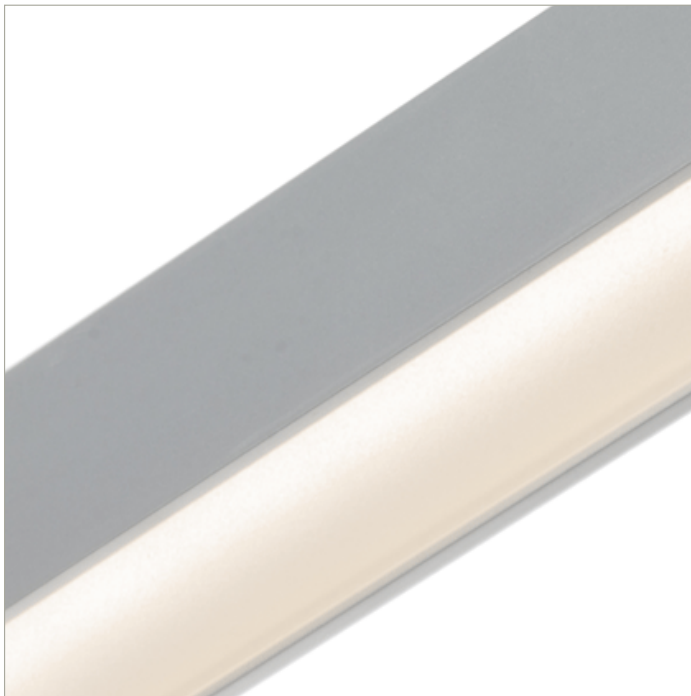
BoxRail® | 207 | Wide Batwing, up | Diffuse, down | 90 CRI | LO

207-BX-XX-4-48-XX-XX-XX-XX-X-X-Z-LO-359-G1D1-X-AL / WH-X

	2700K	3000K	3500K	4000K
Efficacy - Lumens per Watt	77	80	81	82
Total Lumens, 4' rail length (1219mm)	2205	2274	2321	2344
Lumens per foot (305mm)	551	569	580	586
Lumens per foot UP (305mm)	320	330	337	340
Lumens per foot DOWN (305mm)	231	238	243	246
Input Power (W), 4' rail length (1219mm)	28.8	28.8	28.8	28.8
Watts per foot (305mm)	7.2	7.2	7.2	7.2
CRI	94	94	94	94

Due to the large number of options in Vode's product offering, most Vode IES reports are factored reports prepared from source reports. Source reports are the IES test reports prepared for Vode by an NVLAP accredited photometric test laboratory. Factored reports are based on data from the Vode source reports.

If the data above is in black, it is directly from a Vode source report. If it is in grey, it is factored from Vode source reports. Reference details on Vode source reports can be found on the [IES File Finder](#) page on [vode.com](#).



IES Report

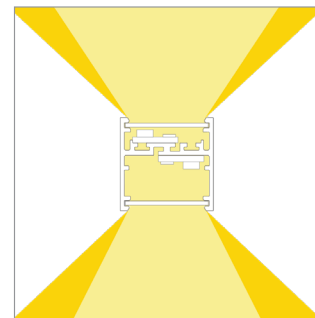
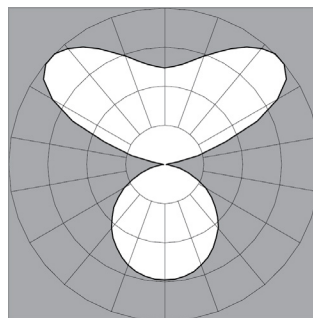
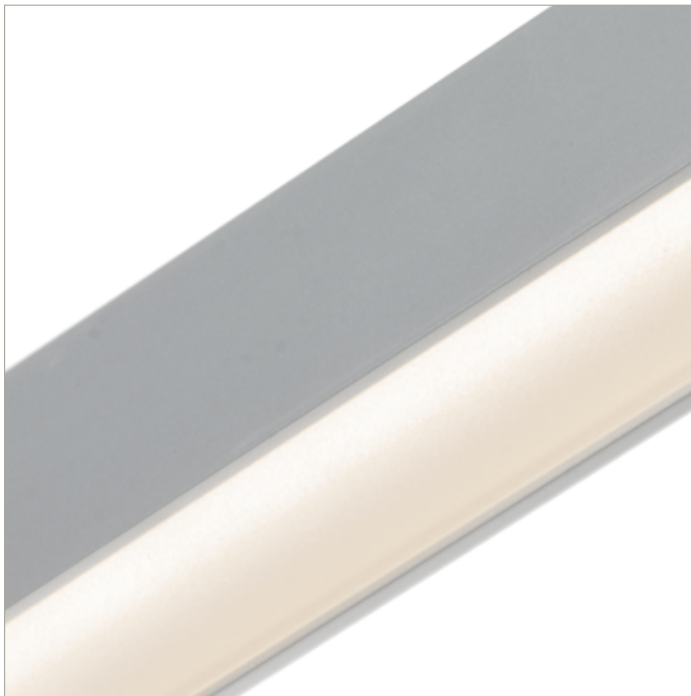
BoxRail[®] | 207 | Wide Batwing, up | Diffuse, down | 90 CRI | SO

207-BX-XX-4-48-XX-XX-XX-XX-X-X-Z-SO-359-G1D1-X-AL / WH-X

	2700K	3000K	3500K	4000K
Efficacy - Lumens per Watt	88	91	92	93
Total Lumens, 4' rail length (1219mm)	4409	4549	4642	4688
Lumens per foot (305mm)	1102	1137	1160	1172
Lumens per foot UP (305mm)	640	660	674	681
Lumens per foot DOWN (305mm)	462	477	486	491
Input Power (W), 4' rail length (1219mm)	50.5	50.5	50.5	50.5
Watts per foot (305mm)	12.7	12.7	12.7	12.7
CRI	94	94	94	94

Due to the large number of options in Vode's product offering, most Vode IES reports are factored reports prepared from source reports. Source reports are the IES test reports prepared for Vode by an NVLAP accredited photometric test laboratory. Factored reports are based on data from the Vode source reports.

If the data above is in black, it is directly from a Vode source report. If it is in grey, it is factored from Vode source reports. Reference details on Vode source reports can be found on the [IES File Finder](#) page on [vode.com](#).



IES Report

BoxRail[®] | 207 | Wide Batwing, up | Diffuse, down | 90 CRI | HO

207-BX-XX-4-48-XX-XX-XX-XX-X-X-Z-HO-359-G1D1-X-AL / WH-X

	2700K	3000K	3500K	4000K
Efficacy - Lumens per Watt	82	84	86	87
Total Lumens, 4' rail length (1219mm)	8378	8643	8819	8907
Lumens per foot (305mm)	2095	2161	2205	2227
Lumens per foot UP (305mm)	1216	1255	1281	1293
Lumens per foot DOWN (305mm)	878	906	924	933
Input Power (W), 4' rail length (1219mm)	103.1	103.1	103.1	103.1
Watts per foot (305mm)	25.8	25.8	25.8	25.8
CRI	94	94	94	94

Due to the large number of options in Vode's product offering, most Vode IES reports are factored reports prepared from source reports. Source reports are the IES test reports prepared for Vode by an NVLAP accredited photometric test laboratory. Factored reports are based on data from the Vode source reports.

If the data above is in black, it is directly from a Vode source report. If it is in grey, it is factored from Vode source reports. Reference details on Vode source reports can be found on the [IES File Finder](#) page on [vode.com](#).